

MORRIS & C^o

X



EMERY
WALKER'S
HOUSE

DESIGN BOOK

EMERY WALKER'S HOUSE COLLECTION

morriscandco.sandersondesigngroup.com

@wmorriscandco





A Friendship Through Craft

Introducing four brand-new designs and six rediscovered William Morris classics, this collection explores the relationship between two extraordinarily creative families.

Collaborator, comrade, friend and neighbour. Sir Emery Walker (1851-1933) was all these things and more to the now-iconic designer, William Morris (1834-1896). This collection centres on Walker's abode, 7 Hammersmith Terrace, where a rich variety of original Morris & Co. furnishings still ornament rooms today. Rediscovering designs long out of production and incredible handmade artefacts from the house, this collaboration celebrates 7 Hammersmith Terrace as one of the last great vestiges of the Arts & Crafts movement.

Recognising the loving and creative relationship between the families of William Morris and Sir Emery Walker, this collection offers something fresh and reawakened for every lover of interiors. With one of the highest numbers of new and re-introduced Morris & Co. designs of any collection this century, this release marks a moment to be celebrated by William Morris fans across the world.

Every measure has been taken to maintain the high craft standards first established by William Morris. Hand-finished touches along with the highest standard of woven and printed qualities emphasise the intimate nature of many designs within the collection. Where designs reference those in Emery Walker's House, the original colourway is usually offered.

This launch comprises 28 wallpapers and 28 fabrics.

**ALL WALLPAPERS HAVE BEEN DESIGNED AND
MANUFACTURED IN THE UNITED KINGDOM.**

morrisandco.sandersondesigngroup.com
@wmorrisandco

EMERY WALKER'S HOUSE COLLECTION



Emery's Willow



A new addition to the Morris & Co. range, Emery's Willow features unmistakable bubble-like shapes as a backdrop, introducing an element of play to this 1874 design. The willow tree, with its delicately entwining branches and curling leaves, is a motif William Morris returned to throughout his creative life.



Wallflower



Morris & Co. are thrilled to re-introduce Wallflower, an 1890 wallpaper design created by William Morris. Scrolling acanthus leaves foreground tenderly rendered wallflowers, creating a pattern of enormous energy and vitality. Dark spots offer the surface a layer of texture, whilst the whitened foliage introduces an almost sculptural quality.

Trent



Trent is an impactful floral design, created with oversized flowerhead motifs set against rich grounds of teal or deeper blues. Translated for the first time onto wallpaper, Trent began life in 1888 with the grand accolade of being Morris & Co.'s most expensive printed textile.





May's Coverlet



In the bedroom of Emery Walker's House lies a most incredible object, now interpreted by the Morris & Co. design studio; a crewel embroidered coverlet. Created by May Morris, daughter of William Morris, for Emery's wife, Mary, during the last bedridden years of her life, it exemplifies May's astonishing needlework abilities. May's Coverlet is made using hand-guided embroidery on a 100% linen base cloth to carefully replicate the fine stitching pattern by May Morris.

Borage



Morris & Co. are thrilled to reintroduce Borage, an 1883 design by William Morris. Translated for the first time onto wallpaper, Borage is a spirited floral pattern with multiple symmetrical axes, lending the eye many pleasing resting points. Beloved by bees and other pollinators, Borage is a perfect example of William Morris drawing ideas about ornamenting interiors from the natural world.





Paint



Featuring colours from original 19th-century logbooks and William Morris archive designs, the authentic Morris & Co. palette is tailor-made for every budding craftsperson. In a versatile palette of 40 timeless hues, Morris & Co. pay homage to the company's compelling artistic development, over 160 years after its creation in 1861.

BIRD

Inspired by an 1878 tapestry creation by William Morris, Bird was the design of choice to adorn his own drawing room in Kelmscott House.

WALLPAPER



217192



217193



217194



217195

FABRIC



237311



237312

BLUEBELL

Bluebell is an 1876 design that takes as its subject the charming, but common, bluebell flower. Framed by bold acanthus leaves and entwined by larger foliage, the humble bluebell weaves this design together like it does the forest floor in spring.

FABRIC



227036



227037



227038

BORAGE

Borage re-enters the Morris & Co. range due to the collaboration collection with Emery Walker's House, the historic home of noted typographer and close friend of William Morris. Walker, dutiful to the design ideas of his friend William Morris, has used Borage as a furnishing fabric in his drawing room to great effect.

WALLPAPER



217196



217197

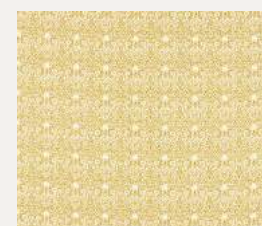


217198

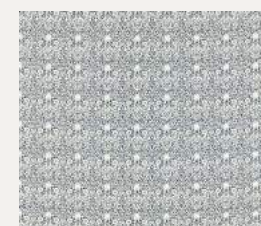


217199

FABRIC



227031



227032



227033

BOWER

The definition of a bower, a pleasant, shady place under trees or climbing plants in a garden or forest, aptly describes this upliftingly rich design. Registered as a William Morris pattern in 1877, Bower depicts a floral wonderland of foliage and flowers ripe with life.

WALLPAPER



217203



217204



217205

FABRIC



227027



227028



227029



227030

DAISY EMBROIDERY

Bursts of vivid multicolour please the eye at every turn in this newly embroidered fabric version of Morris & Co.'s earliest wallpaper (1864), Daisy. Hand-knotted finishes to the floral detailing couple with chunky stitching help to convey a crafted, tactile feel on a 100% linen base cloth.

FABRIC



237310

DOROTHY'S KILIM

Dorothy's Kilim draws from the original found in the bedroom of Dorothy Walker. This colourful kilim is decorated in the Persian style and features geometric motifs typical of kilims from the old Persian Empire – Turkey and Turkic states.

FABRIC



237306



237307

ELMCOTE

Morris & Co. are thrilled to reintroduce Elmcote, a magnificently brooding 1900 design from designer, J.H. Dearle. With gallant seedheads and miniature flowers, the design is connected by swirling foliage arranged in a classically Dearle style.

WALLPAPER



217200



217201



217202

EMERY'S WILLOW

Emery's Willow is inspired by a wallpaper design hung in the drawing room of esteemed typographer, book printer and friend of William Morris, Sir Emery Walker. It re-enters the Morris & Co. range as a result of the collaboration collection between Morris & Co. and Emery Walker's House.

WALLPAPER



217183



217184



217185



217186

FABRIC



227019



227020



227021

FLOWERS BY MAY

Beguiling, jewel-like colours bring to life a startling array of meadow flowers set against a deep midnight indigo. A design of incredible detail and beauty, Flowers By May originally adorned the seat of a 17th century chair which once stood in the library of William Morris.

FABRIC



237313

MAY'S COVERLET

In the bedroom of Emery Walker's House lies a most incredible object, now interpreted by the Morris & Co. design studio; a crewel embroidered coverlet. May's Coverlet is made using hand-guided embroidery on a 100% linen base cloth to carefully replicate the fine stitching pattern by May Morris.

FABRIC



237308



237309

RAMBLING ROSE

Rambling Rose depicts that iconic stalwart of forest walks and cottage gardens alike, the English rose. Climbing, twisting and turning, this thorned rose's beguiling labyrinthine structure betrays the rose's symbolisation of earthy love and purity.

WALLPAPER



217206



217207



217208

ROSE

Rose is a gorgeously layered design with sumptuous rearing tulip and rose heads and dramatic thorned stems. Rose re-enters the Morris & Co. range for the first time in many years exclusively for the Emery Walker's House collection

FABRIC



227022



227023

ROSE AND THISTLE

Re-entering the Morris & Co. range for the first time in many years, Rose & Thistle is arranged in a graceful meandering structure with alternating rose flowerheads. The deep indigo ground offers an almost sculptural quality to this furnishing fabric.

FABRIC



227035

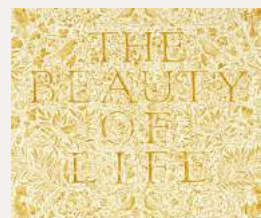
THE BEAUTY OF LIFE

The Beauty of Life is introduced to the Morris & Co. range for the Emery Walker's House collection. The lettering is inspired by William Morris's own book-printing press, The Kelmscott Press, a feat he managed with the unwavering support and guidance of expert typographer, Sir Emery Walker.

WALLPAPER



217190



217191

FABRIC



227034

TRENT

Trent is an impactful floral design, created with oversized flowerhead motifs set against rich grounds of teal or deeper blues. Translated for the first time on to wallpaper, Trent began life in 1888 with the grand accolade of being Morris & Co.'s most expensive printed textile.

WALLPAPER



217209



217210

FABRIC



227024



227025



227026

WALLFLOWER

Wallflower is inspired by the wallpaper hung in the drawing room of esteemed typographer, book printer and friend of William Morris, Sir Emery Walker. Wallflower returns to the Morris & Co. range after many years as a result of the collaboration collection between Morris & Co. and Emery Walker's House.

WALLPAPER



217187



217188



217189



MORRIS & Co

X



EMERY
WALKER'S
HOUSE

Contact Details

LONDON SHOWROOM

Design Centre Chelsea Harbour, First Floor, South Dome, Lots Road, London, SW10 0XE

Tel: + 44 203 903 3700

Email: showroom@sandersondesigngroup.com

NEW YORK SHOWROOM

D&D Building, 979 3rd Avenue, Suite 409, New York, NY 10022

Tel +1 212 319 7220

sales-ny@sandersondesigngroup.com

CHICAGO SHOWROOM

222 W Merchandise Mart Plaza, Suite 6-117A, Chicago, IL 60654

Tel +1 312 929 2058

sales-chicago@sandersondesigngroup.com

DUBAI SHOWROOM

The Prism Tower, Office 2708, Floor 27, PO Box 391982, Business Bay, Dubai, United Arab Emirates

Tel: +971 4361 9766

Email: infome@sandersondesigngroup.com

NETHERLANDS SHOWROOM

ETC Licht & Interieur, Randweg 20, 4104 AC Culemborg

Tel: +31 65349 3696

Email: international@sandersondesigngroup.com

GERMANY SHOWROOM

Kronenstrasse 4, 76133 Karlsruhe

Tel: +49 721 981 985 60

Email: verkauf@sandersondesigngroup.com

Emery Walker's House in Hammersmith, West London is open to the public from March to December on Thursdays and Saturdays. Expert volunteers run 1.5 hour guided tours for small numbers of visitors so booking is essential via emerywalker.org.uk

morriscandco.sandersondesigngroup.com

@wmorriscandco

A PROUD MEMBER OF SANDERSON DESIGN GROUP