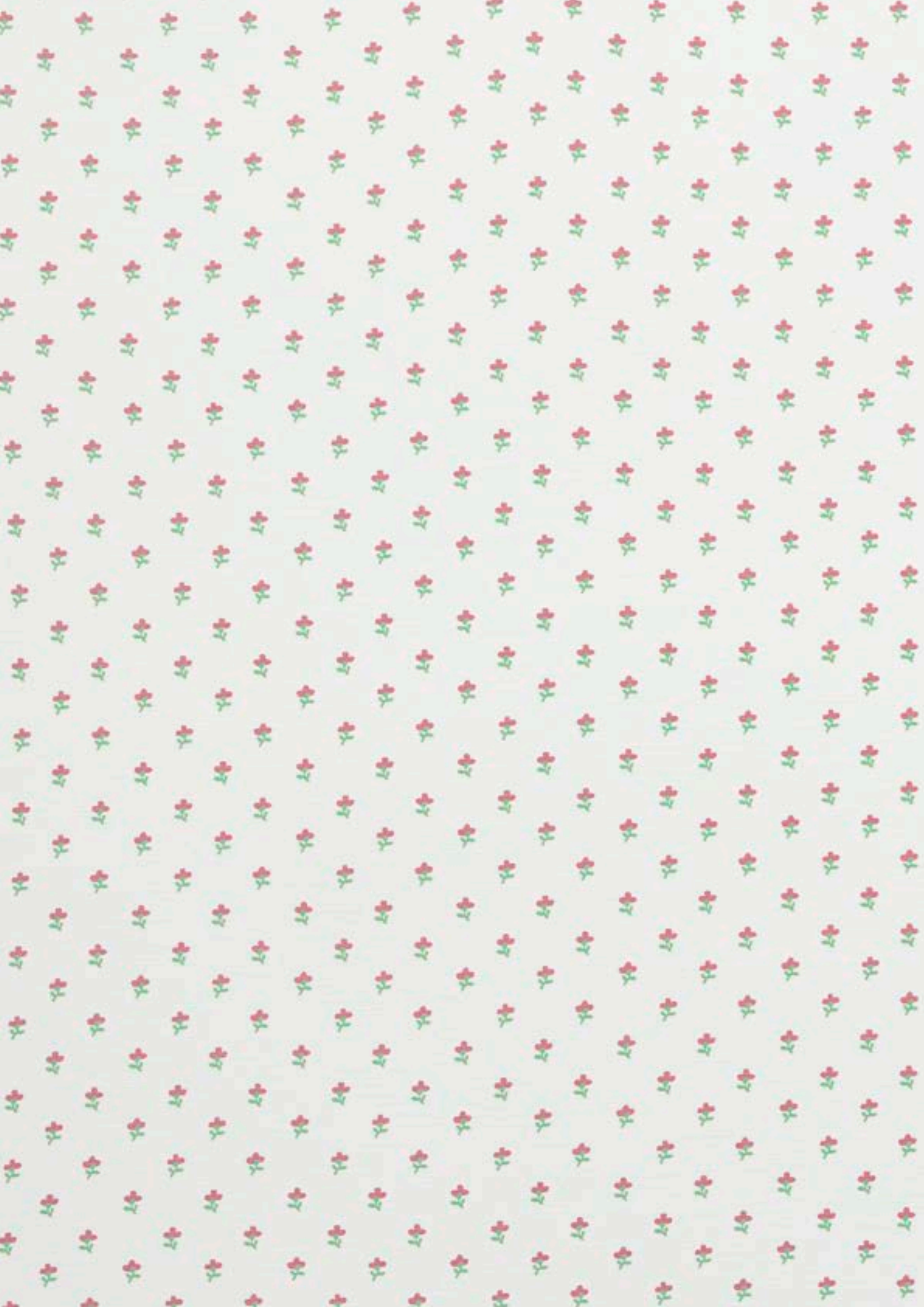




LAURA ASHLEY

SINCE 1953

*70th Anniversary
Collection*



Celebrating 70 years

LAURA ASHLEY

SINCE 1953

Journey through 70 years of Laura Ashley, exploring a special edition print collection that celebrates heritage and nostalgia through new, modern designs and the return of recognisable, iconic patterns.

Inspired by the vast, rich, Laura Ashley design archive, the collection represents the Laura Ashley story, showcasing creativity, craftsmanship and traditional values of quality and originality. A beautifully curated collection of small-scale patterns and bold florals allows you to layer and combine the designs in a fresh, contemporary way. The fresh, eclectic use of pattern and colour will inject happiness into your home, creating a joyful, timeless interior.

The Anniversary collection honours the Laura Ashley signature look in an authentic way with a fresh, modern approach to the roots of Laura Ashley.









Tulips

A springtime display of tulips mixed with daffodils, this 1990s gouache painted floral design was inspired by a piece of painted artwork found in the Laura Ashley archive.



Tulips / Dark Seaspray



Wood Violet / Apricot



Louise Star / Sage



Summer Palace / Sage / Apricot



Candy Stripe / Apricot



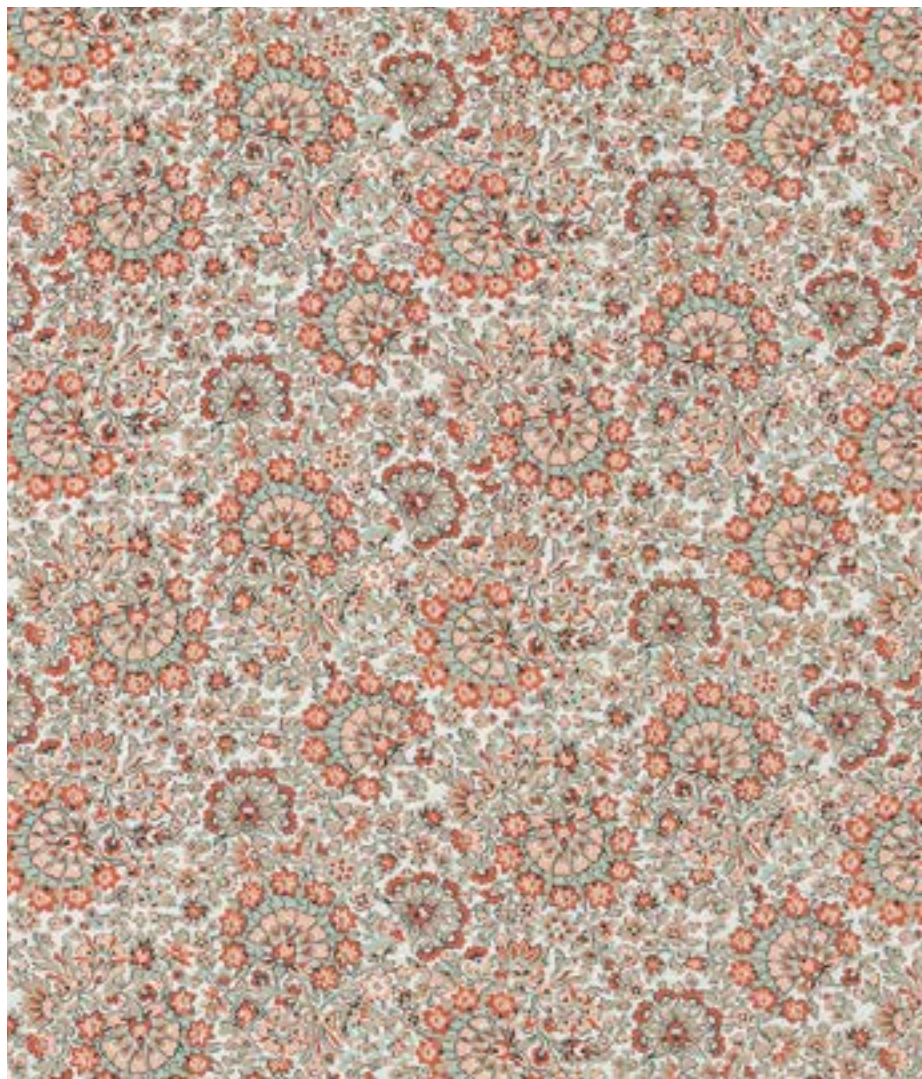
Aria / Dark Seaspray



Campion / Plaster



Rye / Hedgerow



Painswick Paisley / Apricot



Summer Palace / Sage



Wickerwork / Sage



Painswick Paisley

Inspired by an artwork from the Laura Ashley archive, this paisley design features a dense overall pattern of stylised blooming flowerheads with curling stems.



Painswick Paisley / Coral Pink



Candy Stripe / Pale Ochre



Louise Star / Pink



Charlotte / Coral Pink



Louise Star / China Blue



Wood Violet / Peony Pink



Tulips / China Blue



Rowena / Peony Pink



Aria / Duck Egg



Wild Meadow / Coral Pink



Summer Palace / Duck Egg



Wisteria / Coral Pink



Wickerwork / Coral Pink



Wisteria

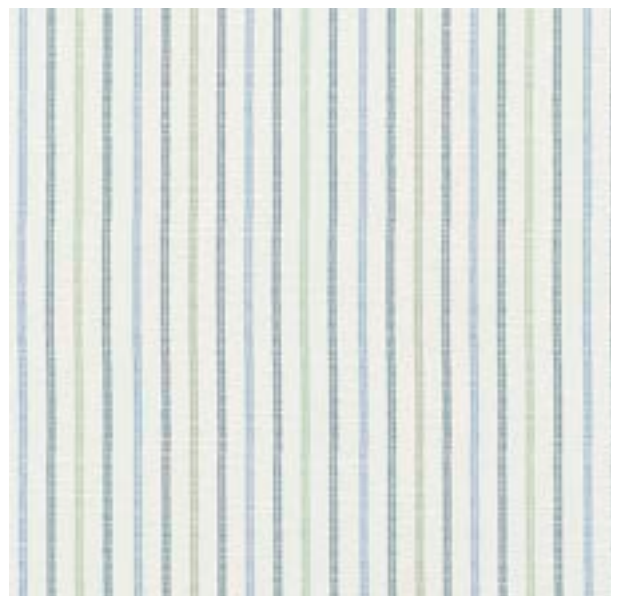
Wisteria print has proved to be a Laura Ashley classic. Inspired by an antique painted artwork from our Archive, the design features trailing stems of Wisteria flowers and berries.



Wisteria / Newport Blue



Rye / Gold



Candy Stripe / Newport Blue



Hartington / Jade



Wood Violet / Gold



Campion / Dark Newport Blue



Elderwood / Fern

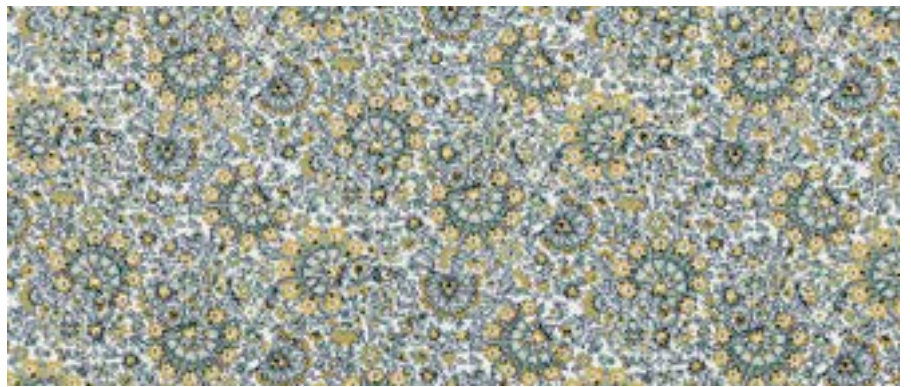




Wood Violet / Gold



Wild Meadow / Pale Gold



Painswick Paisley / Newport Blue



Rowena / Pale Gold



Tulips / Gold



Tregaron / Midnight

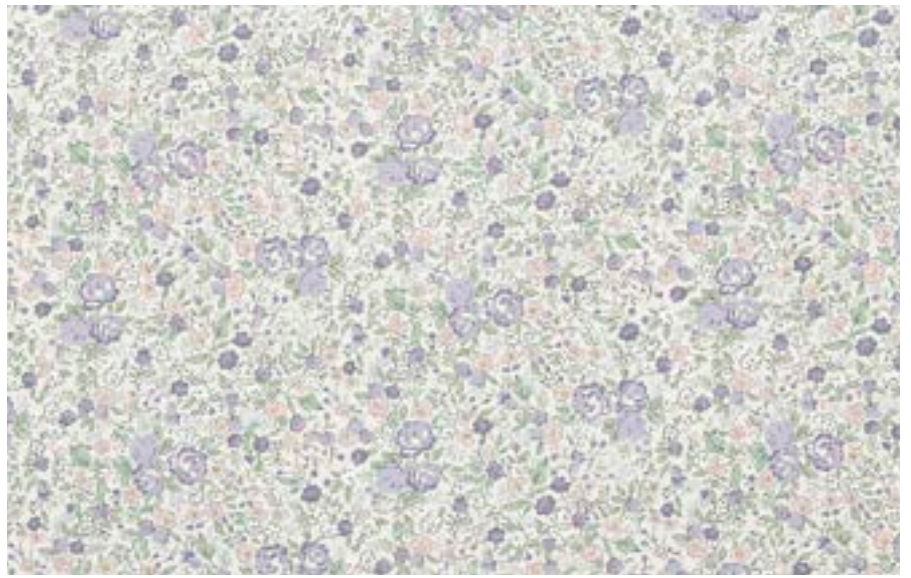


Summer Palace / Midnight





Louise Star / Pink



Rowena / Lavender



Summer Palace / Dove Grey



Wild Meadow / Chalk Pink



Wisteria / Lavender



Aria / Dove Grey



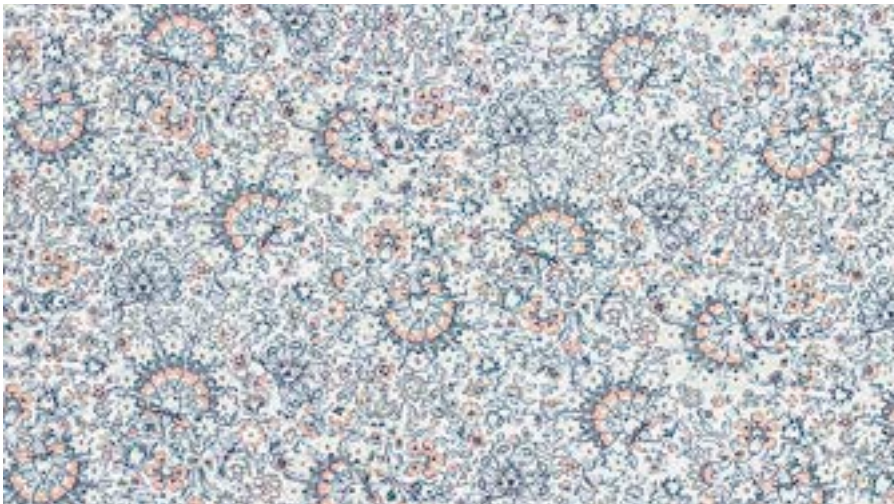
Candy Stripe / Dove Grey



Stocks / Lavender



Rye / Dove Grey



Painswick Paisley / Pale Slate



Campion / Duck Egg



Tregaron / Silver



70th Anniversary

DESIGN	CARE INSTRUCTIONS	COMPOSITION	SUITABILITY	APPROXIMATE WIDTH * (CM)	VERTICAL PATTERN REPEAT * (CM)	HORIZONTAL PATTERN REPEAT * (CM)	WEIGHT (GR/M2)
ARIA		100% COTTON		140	66	69	228
CAMPION		100% COTTON		140	42	35	220
CANDY STRIPE		100% COTTON		140	STRIPE	9	228
CHARLOTTE		100% COTTON		140	27	47	228
ELDERWOOD		100% COTTON		140	69	140	228
HARTINGTON		100% COTTON		140	69.5	69	220
LOUISE STAR		100% COTTON		140	11	9	220
PAINSWICK PAISLEY		100% COTTON		140	16.5	35	228
ROWENA		100% COTTON		140	16.5	35	228
RYE		100% COTTON		140	34.5	70	220
STOCKS		100% COTTON		140	51	47	228
SUMMER PALACE		100% COTTON		140	57	47	220
TREGARON		100% COTTON		140	70	70	220
TULIPS		100% COTTON		140	34	70	220
WICKERWORK		100% COTTON		140	3	3	228
WILD MEADOW		100% COTTON		140	43.5	47	228
WISTERIA		100% COTTON		140	66	69.5	228
WOOD VIOLET		100% COTTON		140	8	8.5	228

*PATTERN REPEATS, JOINED WIDTHS AND PATTERN ALIGNMENT

Pattern repeats and widths are approximate and are not exact and can vary by ±5%, we cannot guarantee exact measurement.

Textiles are not completely stable. It is always possible that the pattern will not be completely 'square' on the cloth. Whilst every effort is made to avoid distortion, a commercial tolerance is to be accepted.

KEY	
	SUITABLE FOR CURTAINS
	WASH AT 30°C
	COOL IRON
	LINE DRY
	DO NOT BLEACH
	DO NOT TUMBLE DRY
	SUITABLE FOR DRY CLEANING

COLOUR VARIANCE

Slight colour variances may occur between batches.

LAURA ASHLEY

SINCE 1953

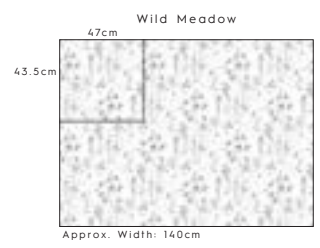
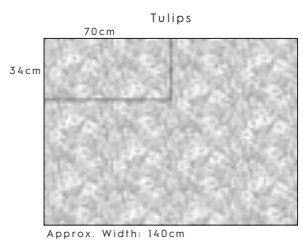
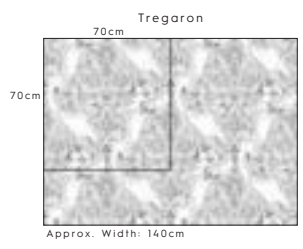
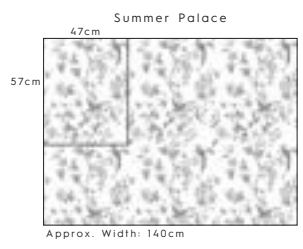
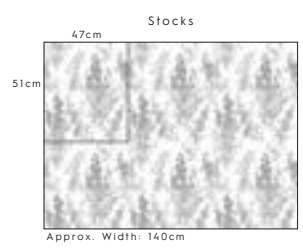
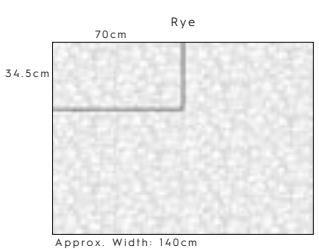
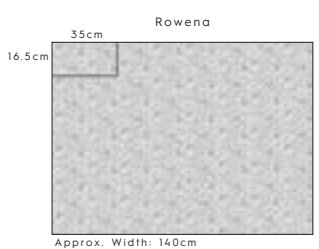
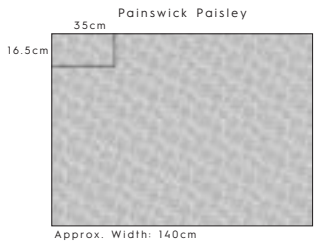
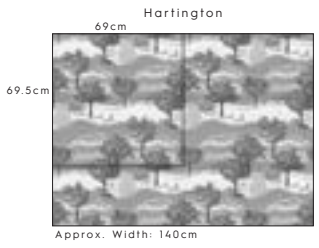
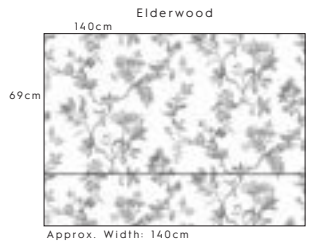
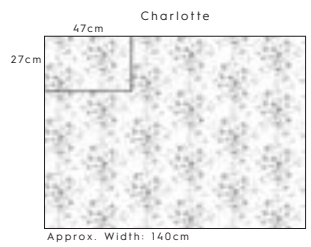
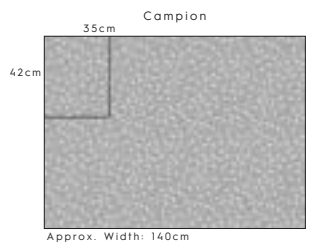
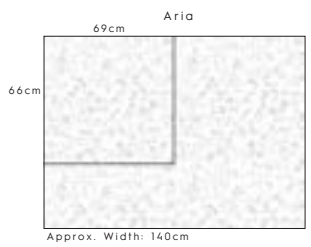
Distributed by **ASHLEY WILDE**

Tel: +44(0)1707 635 201

Email: info@ashleywildegroupp.com Website: www.ashleywildegroupp.com



*Please be aware that the patterns in this look book may not be to scale, as this is a representation of the overall patterns, or an accurate representation of colour due to screen constraints. To avoid any disappointment with your purchase, we highly recommend obtaining samples beforehand.







LAURA ASHLEY

SINCE 1953

*70th Anniversary
Collection*